

5, 30 Langham Street, W1

Gross internal area (approx.)

178 Sq m (1917 Sq ft) Including Lift and Under 1.5m

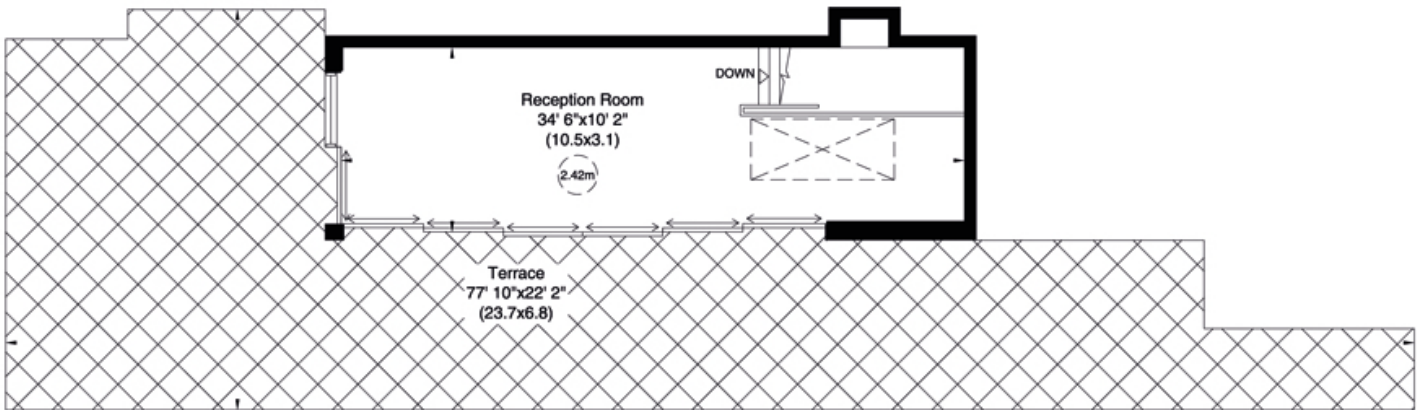
173 Sq m (1859 Sq ft) Excluding Lift and Under 1.5m

Terrace area (approx.)

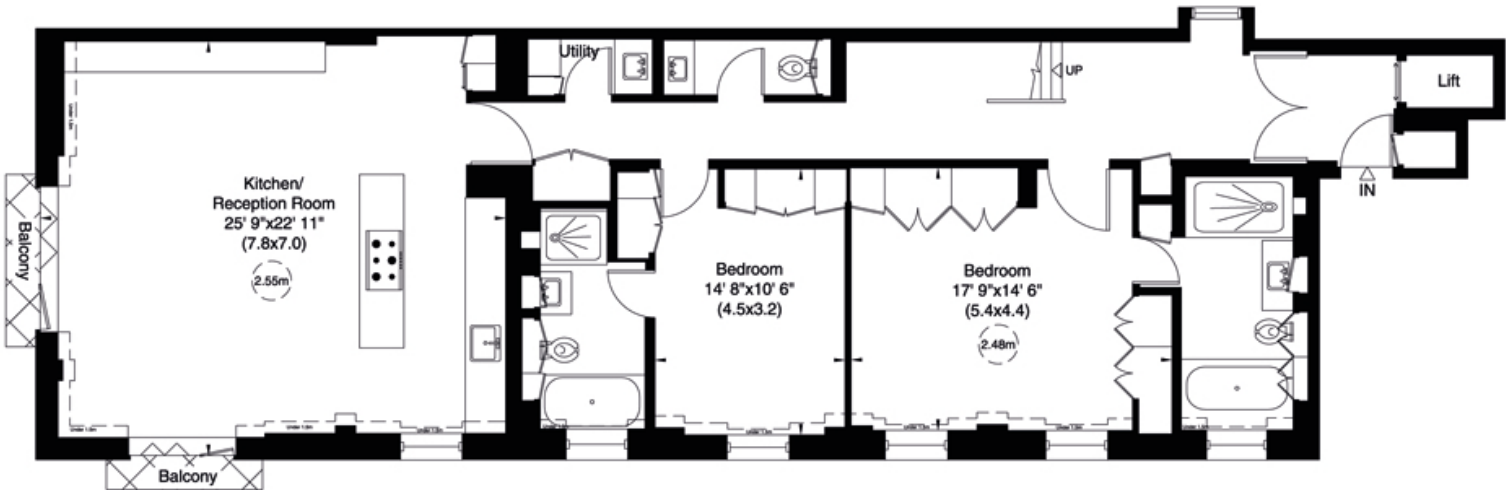
84 Sq m (904 Sq ft)

For identification only, Not to Scale

capital 020 8671 7722



Sixth Floor



Fifth Floor

Not to scale, for guidance only and must not be relied upon as a statement of fact. All measurements and areas are approximate only (and have been prepared in accordance with the current edition of the RICS Code of Measuring Practice).